

## \$0 - 7729 85 Street, Edmonton

---

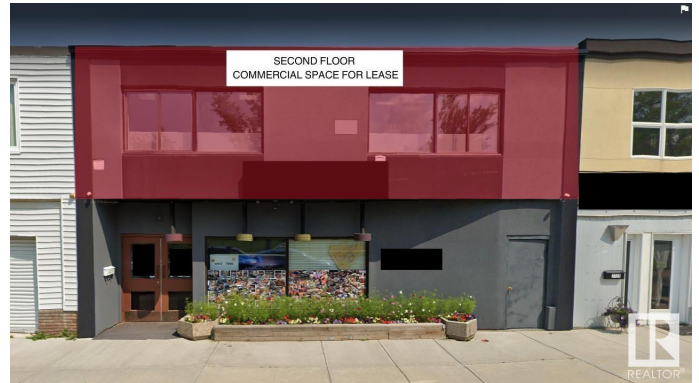
MLS® #E4398923

**\$0**

0 Bedroom, 0.00 Bathroom,  
Retail on 0.00 Acres

King Edward Park, Edmonton, AB

1134 sq ft commercial space available for lease, suitable for office, retail, or personal service businesses. Located in a transforming and vibrant community with limited commercial space, just blocks from the LRT station. Gross Lease \$2500/month



Built in 1953

### Essential Information

MLS® #	E4398923
Bathrooms	0.00
Acres	0.00
Year Built	1953
Type	Retail
Status	Active

### Community Information

Address	7729 85 Street
Area	Edmonton
Subdivision	King Edward Park
City	Edmonton
County	ALBERTA
Province	AB
Postal Code	T6C 3B4

### Exterior

Exterior	Modular
----------	---------

Construction      Modular

### **Additional Information**

Date Listed      July 24th, 2024

Days on Market      233

Zoning      Zone 17

DATA IS DEEMED RELIABLE BUT IS NOT GUARANTEED ACCURATE BY THE REALTORS® ASSOCIATION OF EDMONTON. COPYRIGHT 2025 BY THE REALTORS® ASSOCIATION OF EDMONTON. ALL RIGHTS RESERVED. Trademarks are owned or controlled by the Canadian Real Estate Association (CREA) and identify real estate professionals who are members of CREA (REALTOR®, REALTORS®) and/or the quality of services they provide (MLS®, Multiple Listing Service®)

Listing information last updated on March 14th, 2025 at 1:02am MDT