

\$709,900 - 6422 28 Avenue, Edmonton

MLS® #E4420285

\$709,900

5 Bedroom, 3.00 Bathroom, 2,521 sqft
Single Family on 0.00 Acres

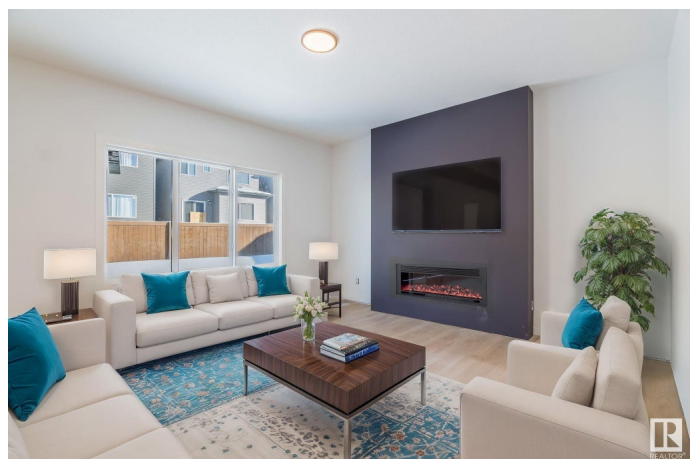
Mattson, Edmonton, AB

This beautifully designed 5-bedroom, 3-bathroom home sits on a regular lot and offers a perfect blend of style and functionality. The main floor features a bedroom and full bath, ideal for guests or multi-generational living, along with a den for a home office or flex space. The open-concept kitchen includes modern finishes and a spice kitchen for added convenience. Upstairs, you'll find four spacious bedrooms, a versatile bonus room, and a laundry room for added convenience. The luxurious primary suite boasts a 5-piece ensuite with a soaker tub, dual sinks, and a shower. With ample living space, modern upgrades, and a prime location near schools, parks, and shopping, this home is perfect for growing families. Don't miss out on this incredible opportunity!

Built in 2024

Essential Information

MLS® #	E4420285
Price	\$709,900
Bedrooms	5
Bathrooms	3.00
Full Baths	3
Square Footage	2,521
Acres	0.00
Year Built	2024



Type	Single Family
Sub-Type	Detached Single Family
Style	2 Storey
Status	Active

Community Information

Address	6422 28 Avenue
Area	Edmonton
Subdivision	Mattson
City	Edmonton
County	ALBERTA
Province	AB
Postal Code	T6X 1A3

Amenities

Amenities	Closet Organizers, No Animal Home, No Smoking Home, See Remarks
Parking Spaces	4
Parking	Double Garage Attached

Interior

Interior Features	ensuite bathroom
Appliances	See Remarks
Heating	Forced Air-1, Natural Gas
Stories	2
Has Basement	Yes
Basement	Full, Unfinished

Exterior

Exterior	Wood, Vinyl
Exterior Features	Public Transportation, Schools, Shopping Nearby, See Remarks
Roof	Asphalt Shingles
Construction	Wood, Vinyl
Foundation	Concrete Perimeter

School Information

Elementary	Shauna May Seneca School
Middle	Jan Reimer School (K-9)
High	W.P. Wagner School

Additional Information

Date Listed February 4th, 2025

Days on Market 60

Zoning Zone 53

DATA IS DEEMED RELIABLE BUT IS NOT GUARANTEED ACCURATE BY THE REALTORS® ASSOCIATION OF EDMONTON. COPYRIGHT 2025 BY THE REALTORS® ASSOCIATION OF EDMONTON. ALL RIGHTS RESERVED. Trademarks are owned or controlled by the Canadian Real Estate Association (CREA) and identify real estate professionals who are members of CREA (REALTOR®, REALTORS®) and/or the quality of services they provide (MLS®, Multiple Listing Service®)

Listing information last updated on April 5th, 2025 at 6:02pm MDT