

## \$779,000 - 1391 Ainslie Wynd, Edmonton

MLS® #E4422503

**\$779,000**

4 Bedroom, 2.50 Bathroom, 2,983 sqft  
Single Family on 0.00 Acres

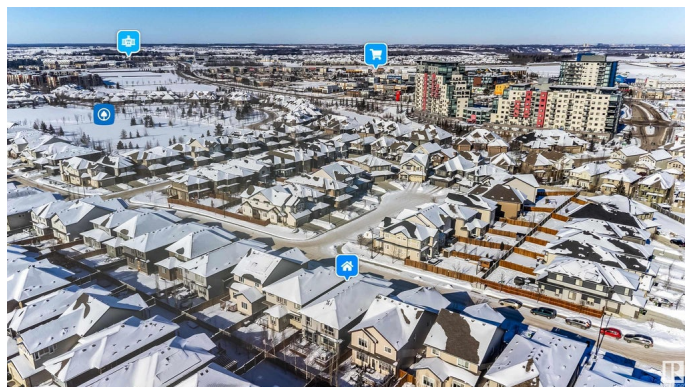
Ambleside, Edmonton, AB

Nestled in Windermere's vibrant Ambleside community, 1391 Ainslie Wynd offers a luxurious 3000 sqft family home. This air-conditioned residence features a great layout with an open-concept floor plan. On the main floor, you will see a flex room, a spacious mudroom with wall units, and a covered side balcony; The upgraded kitchen boasts high-end stainless appliances, while the sunlit living and dining areas provide warmth and comfort. Upstairs, four large bedrooms and a bright bonus room cater to families of all sizes. The master suite includes a dual-sided gas fireplace, a lavish ensuite with a freestanding tub, double sink vanity, and a spacious walk-in closet. The south-facing backyard features a deck and a play station, artificial grass, perfect for children. Located on a quiet street, this home is minutes from schools, parks, shops, and major roads like Hwy 216 and Terwilligar Dr. A perfect blend of comfort, luxury, and convenience for a thriving family life.

Built in 2016

### Essential Information

MLS® #	E4422503
Price	\$779,000
Bedrooms	4
Bathrooms	2.50



Full Baths	2
Half Baths	1
Square Footage	2,983
Acres	0.00
Year Built	2016
Type	Single Family
Sub-Type	Detached Single Family
Style	2 Storey
Status	Active

### Community Information

Address	1391 Ainslie Wynd
Area	Edmonton
Subdivision	Ambleside
City	Edmonton
County	ALBERTA
Province	AB
Postal Code	T6W 3E9

### Amenities

Amenities	Air Conditioner, Ceiling 9 ft., Deck, Detectors Smoke, HRV System
Parking	Double Garage Attached

### Interior

Interior Features	ensuite bathroom
Appliances	Air Conditioning-Central, Dishwasher-Built-In, Dryer, Fan-Ceiling, Garage Control, Garage Opener, Garburator, Hood Fan, Refrigerator, Stove-Gas, Washer, Window Coverings
Heating	Forced Air-1, Natural Gas
Stories	2
Has Basement	Yes
Basement	Full, Unfinished

### Exterior

Exterior	Wood, Stone, Vinyl
Exterior Features	Landscaped, Playground Nearby, Public Transportation, Schools, Shopping Nearby, See Remarks
Roof	Asphalt Shingles
Construction	Wood, Stone, Vinyl

Foundation            Concrete Perimeter

### **Additional Information**

Date Listed            February 21st, 2025

Days on Market      44

Zoning                 Zone 56

HOA Fees Freq.      Annually

DATA IS DEEMED RELIABLE BUT IS NOT GUARANTEED ACCURATE BY THE REALTORS® ASSOCIATION OF EDMONTON. COPYRIGHT 2025 BY THE REALTORS® ASSOCIATION OF EDMONTON. ALL RIGHTS RESERVED. Trademarks are owned or controlled by the Canadian Real Estate Association (CREA) and identify real estate professionals who are members of CREA (REALTOR®, REALTORS®) and/or the quality of services they provide (MLS®, Multiple Listing Service®)

Listing information last updated on April 6th, 2025 at 12:47pm MDT