

Courtesy Of Kurt Tovillo Of MaxWell Polaris

\$69,900 - 302 10615 110 Street, Edmonton

MLS® #E4422780

\$69,900

1 Bedroom, 1.00 Bathroom, 700 sqft
Condo / Townhouse on 0.00 Acres

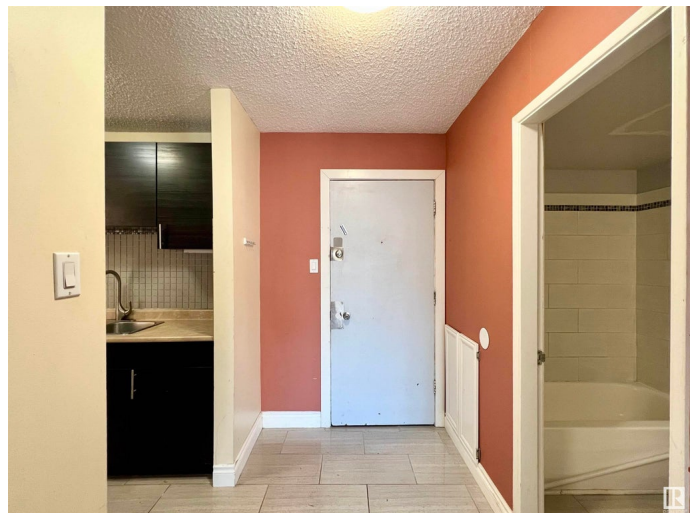
Queen Mary Park, Edmonton, AB

Seize the opportunity to own a prime investment property just a stone's throw from MacEwan University and Rogers Place! Welcome to Ashton Court in the vibrant Queen Mary Park community, where downtown living meets ultimate convenience. This east-facing unit boasts a balcony perfect for sipping your morning coffee while soaking up the summer sun. With rough-ins for in-suite laundry and shared laundry available in the building, this home offers a perfect blend of comfort and practicality. Don't miss out on this incredible chance to own in one of Edmonton's most sought-after areas! PROPERTY IS SOLD AS IS WHERE IS AT THE TIME OF POSSESSION, NO WARRANTIES OR REPRESENTATIONS.

Built in 1972

Essential Information

MLS® #	E4422780
Price	\$69,900
Bedrooms	1
Bathrooms	1.00
Full Baths	1
Square Footage	700
Acres	0.00
Year Built	1972



Type	Condo / Townhouse
Sub-Type	Lowrise Apartment
Style	Single Level Apartment
Status	Active

Community Information

Address	302 10615 110 Street
Area	Edmonton
Subdivision	Queen Mary Park
City	Edmonton
County	ALBERTA
Province	AB
Postal Code	T5H 3C7

Amenities

Amenities	On Street Parking, Security Door
Parking	Stall

Interior

Appliances	Dishwasher-Built-In, Hood Fan, Refrigerator, Stove-Electric, Window Coverings
Heating	Baseboard, Hot Water, Natural Gas
# of Stories	4
Stories	1
Has Basement	Yes
Basement	None, No Basement

Exterior

Exterior	Wood, Brick, Vinyl
Exterior Features	Level Land, Schools, Shopping Nearby, View City, View Downtown
Roof	Asphalt Shingles
Construction	Wood, Brick, Vinyl
Foundation	Concrete Perimeter

Additional Information

Date Listed	February 25th, 2025
Days on Market	38
Zoning	Zone 08
RE / Bank Owned	Yes

Condo Fee \$383

DATA IS DEEMED RELIABLE BUT IS NOT GUARANTEED ACCURATE BY THE REALTORS® ASSOCIATION OF EDMONTON. COPYRIGHT 2025 BY THE REALTORS® ASSOCIATION OF EDMONTON. ALL RIGHTS RESERVED. Trademarks are owned or controlled by the Canadian Real Estate Association (CREA) and identify real estate professionals who are members of CREA (REALTOR®, REALTORS®) and/or the quality of services they provide (MLS®, Multiple Listing Service®)

Listing information last updated on April 4th, 2025 at 5:02pm MDT