

Courtesy Of Diana Wong Of RE/MAX River City

# \$998,000 - 8510 80 Avenue, Edmonton

MLS® #E4423392

**\$998,000**

6 Bedroom, 5.00 Bathroom, 2,494 sqft  
Single Family on 0.00 Acres

King Edward Park, Edmonton, AB

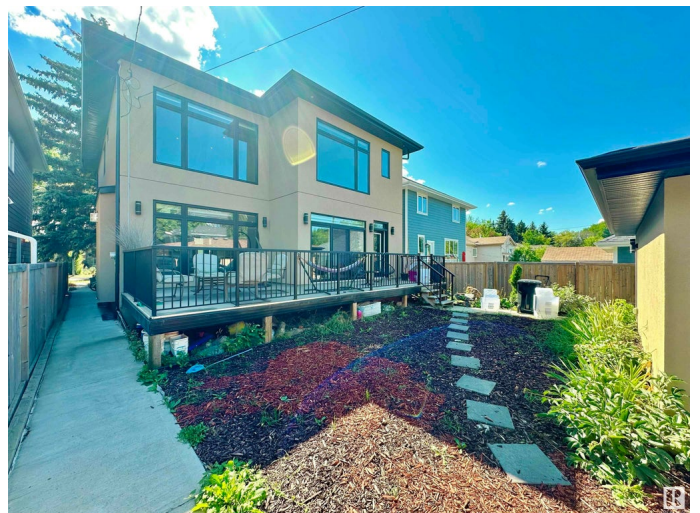
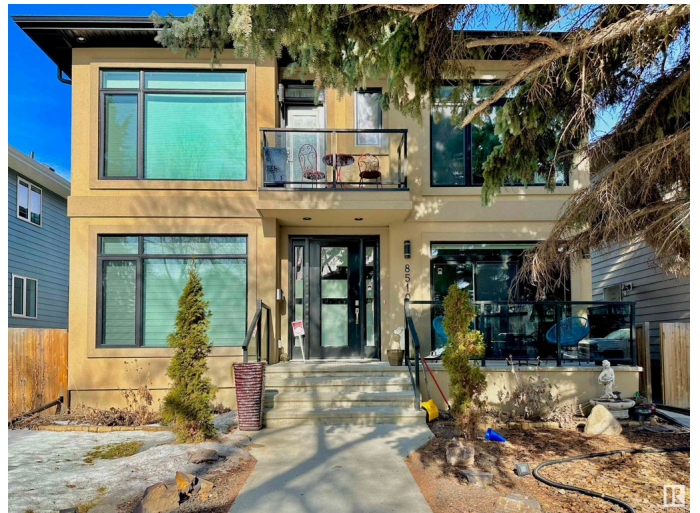
Welcome to the charming neighbourhood of King Edward Park! This stunning home was built in 2016 and offers modern luxury with no expense spared. Enjoy real hardwood floors throughout, high-end appliances, granite countertops, an abundance of natural light from numerous large windows, and a soaring 20-foot ceiling in the family room. Each of the three upstairs bedrooms has its own ensuite and walk-in closet, and the master bedroom has its own walk out patio. The gourmet kitchen features a gas range stove. On the main floor, you'll find a spacious office located at the front of the home. The large composite deck in the backyard is perfect for BBQs and outdoor entertaining. The property also includes a double detached garage and a fenced backyard. Convenience is key with ample shopping, parks, schools, and public transit all nearby. Additionally, the home has a full legal basement suite with a separate entrance, complete with its own kitchen, laundry, two bedrooms, and an elevated floor. Don't Miss Out!

Built in 2016

## Essential Information

MLS® # E4423392

Price \$998,000



|                |                        |
|----------------|------------------------|
| Bedrooms       | 6                      |
| Bathrooms      | 5.00                   |
| Full Baths     | 5                      |
| Square Footage | 2,494                  |
| Acres          | 0.00                   |
| Year Built     | 2016                   |
| Type           | Single Family          |
| Sub-Type       | Detached Single Family |
| Style          | 2 Storey               |
| Status         | Active                 |

### **Community Information**

|             |                  |
|-------------|------------------|
| Address     | 8510 80 Avenue   |
| Area        | Edmonton         |
| Subdivision | King Edward Park |
| City        | Edmonton         |
| County      | ALBERTA          |
| Province    | AB               |
| Postal Code | T6C 0T3          |

### **Amenities**

|                |   |
|----------------|---|
| Amenities      | Off Street Parking, On Street Parking, Air Conditioner, Carbon Monoxide Detectors, Ceiling 10 ft., Deck, Detectors Smoke, Hot Water Natural Gas, No Smoking Home, Vinyl Windows, Natural Gas BBQ Hookup, 9 ft. Basement Ceiling |
| Parking Spaces | 4   |
| Parking        | Double Garage Detached, Over Sized  |

### **Interior**

|                   |   |
|-------------------|---|
| Interior Features | ensuite bathroom  |
| Appliances        | Air Conditioning-Central, Dishwasher-Built-In, Dryer, Hood Fan, Oven-Built-In, Oven-Microwave, Refrigerator, Stove-Electric, Stove-Gas, Window Coverings, Dryer-Two, Refrigerators-Two, Dishwasher-Two, Curtains and Blinds |
| Heating           | Forced Air-1, Natural Gas   |
| Fireplace         | Yes   |
| Fireplaces        | Glass Door  |
| Stories           | 3   |
| Has Basement      | Yes   |

Basement Full, Finished

## Exterior

Exterior Wood, Stucco

Exterior Features Back Lane, Fenced, Playground Nearby, Schools, Shopping Nearby

Roof Asphalt Shingles

Construction Wood, Stucco

Foundation Concrete Perimeter

## Additional Information

Date Listed February 28th, 2025

Days on Market 14

Zoning Zone 17

DATA IS DEEMED RELIABLE BUT IS NOT GUARANTEED ACCURATE BY THE REALTORS® ASSOCIATION OF EDMONTON. COPYRIGHT 2025 BY THE REALTORS® ASSOCIATION OF EDMONTON. ALL RIGHTS RESERVED. Trademarks are owned or controlled by the Canadian Real Estate Association (CREA) and identify real estate professionals who are members of CREA (REALTOR®, REALTORS®) and/or the quality of services they provide (MLS®, Multiple Listing Service®)

Listing information last updated on March 14th, 2025 at 7:02am MDT