

\$0 - 13939 156 Street, Edmonton

MLS® #E4424939

\$0

0 Bedroom, 0.00 Bathroom,
Industrial on 0.00 Acres

Mistatim Industrial, Edmonton, AB

The property is 3,300sq.ft.± of Office/Warehouse Space. It features both grade loading. Conveniently located just off 137 Avenue and 156 Street, the site offers quick access to major routes, including St. Albert Trail, Yellowhead Trail, and Anthony Henday Drive. This property is ideal for businesses in manufacturing, transportation and logistics, retail showrooms, and more.

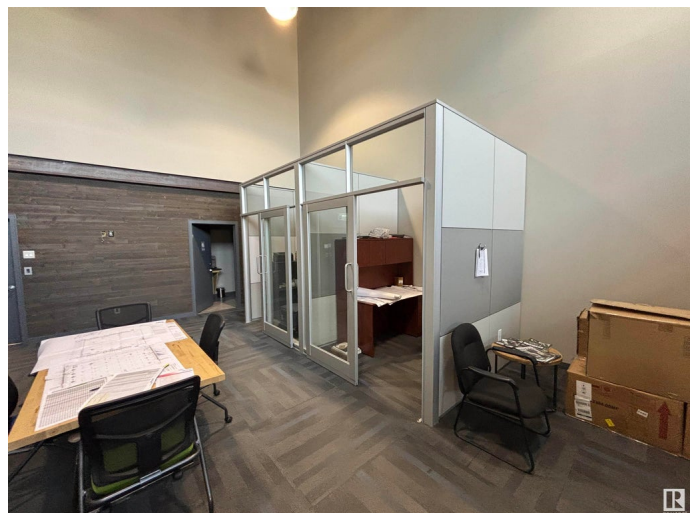
Built in 2017

Essential Information

MLS® #	E4424939
Bathrooms	0.00
Acres	0.00
Year Built	2017
Type	Industrial
Status	Active

Community Information

Address	13939 156 Street
Area	Edmonton
Subdivision	Mistatim Industrial
City	Edmonton
County	ALBERTA
Province	AB
Postal Code	T6V 1J1



Exterior

Exterior	Mixed
Construction	Mixed

Additional Information

Date Listed	March 10th, 2025
Days on Market	24
Zoning	Zone 40

DATA IS DEEMED RELIABLE BUT IS NOT GUARANTEED ACCURATE BY THE REALTORS® ASSOCIATION OF EDMONTON. COPYRIGHT 2025 BY THE REALTORS® ASSOCIATION OF EDMONTON. ALL RIGHTS RESERVED. Trademarks are owned or controlled by the Canadian Real Estate Association (CREA) and identify real estate professionals who are members of CREA (REALTOR®, REALTORS®) and/or the quality of services they provide (MLS®, Multiple Listing Service®)

Listing information last updated on April 3rd, 2025 at 6:17am MDT