

# \$234,998 - 103 9215 228 Street, Edmonton

MLS® #E4427068

**\$234,998**

2 Bedroom, 2.00 Bathroom, 697 sqft  
Condo / Townhouse on 0.00 Acres

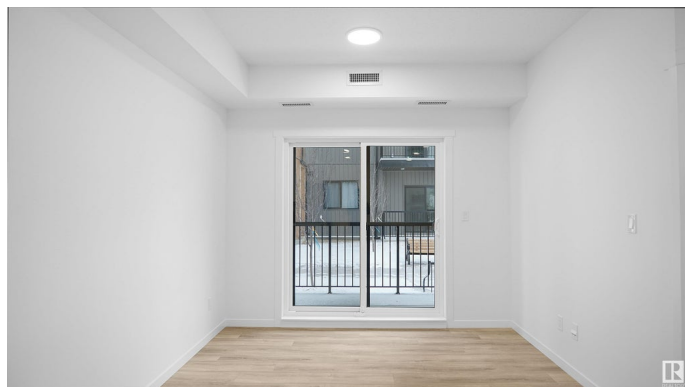
Secord, Edmonton, AB

Welcome to Nordic Village in Secord, where we master the art of Scandinavian design. This urban flat is StreetSide Developments "Sisu" model which has modern Nordic farmhouse architecture and energy efficient construction, our maintenance free townhomes & urban flats offer the amenities you need without the big price tag. Here's what you can expect to find in this exciting new West Edmonton community. Modern finishes including quartz counters & vinyl plank flooring. Ample visitor parking, close to all amenities and much more. \*\*\* This unit is almost complete the photos used are of the same unit and colors may vary, should be complete by the end of June \*\*\*

Built in 2024

## Essential Information

MLS® #	E4427068
Price	\$234,998
Bedrooms	2
Bathrooms	2.00
Full Baths	2
Square Footage	697
Acres	0.00
Year Built	2024
Type	Condo / Townhouse
Sub-Type	Lowrise Apartment



Style Single Level Apartment  
Status Active

### Community Information

Address 103 9215 228 Street  
Area Edmonton  
Subdivision Secord  
City Edmonton  
County ALBERTA  
Province AB  
Postal Code T5T 7R9

### Amenities

Amenities No Animal Home, No Smoking Home  
Parking Stall

### Interior

Interior Features ensuite bathroom  
Appliances Dishwasher-Built-In, Microwave Hood Fan, Refrigerator, Stacked Washer/Dryer, Stove-Electric  
Heating Forced Air-1, Natural Gas  
# of Stories 3  
Stories 1  
Has Basement Yes  
Basement None, No Basement

### Exterior

Exterior Wood, Vinyl  
Exterior Features Airport Nearby, Golf Nearby, Landscaped, Park/Reserve, Playground Nearby, Public Swimming Pool, Public Transportation, Schools, Shopping Nearby, See Remarks  
Roof Asphalt Shingles  
Construction Wood, Vinyl  
Foundation Concrete Perimeter

### Additional Information

Date Listed March 21st, 2025  
Days on Market 21  
Zoning Zone 58  
Condo Fee \$227

DATA IS DEEMED RELIABLE BUT IS NOT GUARANTEED ACCURATE BY THE REALTORS® ASSOCIATION OF EDMONTON. COPYRIGHT 2025 BY THE REALTORS® ASSOCIATION OF EDMONTON. ALL RIGHTS RESERVED. Trademarks are owned or controlled by the Canadian Real Estate Association (CREA) and identify real estate professionals who are members of CREA (REALTOR®, REALTORS®) and/or the quality of services they provide (MLS®, Multiple Listing Service®)

Listing information last updated on April 11th, 2025 at 12:32am MDT