

Courtesy Of Michael E Grekul Of MaxWell Progressive

\$159,500 - 306 5065 31 Avenue, Edmonton

MLS® #E4427178

\$159,500

1 Bedroom, 1.00 Bathroom, 627 sqft
Condo / Townhouse on 0.00 Acres

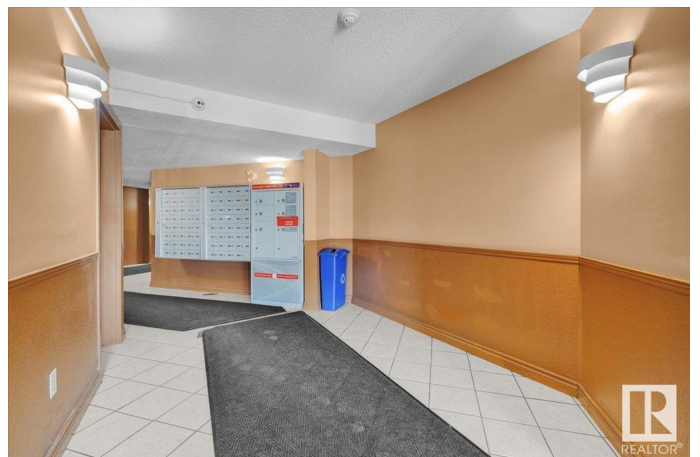
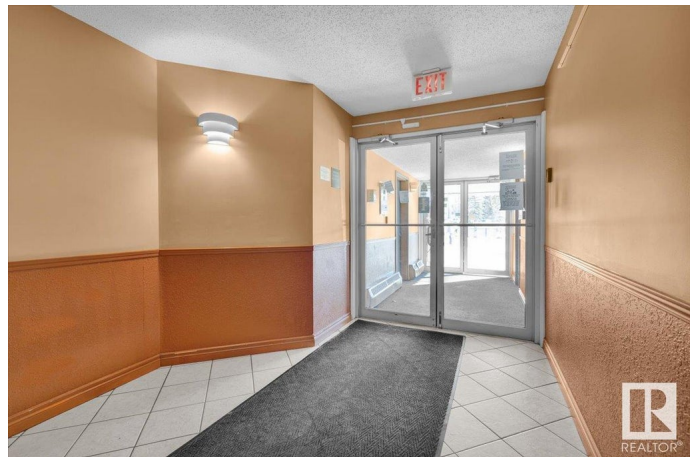
Tawa, Edmonton, AB

Immaculate one bedroom, 3rd floor apartment that is completely "move-in" ready. The Mainstreet complex is located close to the Grey Nuns Hospital (5 minute walk) and would be an ideal location for anyone working at the hospital. Layout is excellent with a pass through galley kitchen, formal dining area, large living room with sliding door access to the north facing balcony, laundry/storage room, spacious primary bedroom, common 4 pc bath and storage/coat room at entry. This apartment has been recently upgraded with new luxury vinyl plank, carpet, kitchen cabinets, counter tops, baseboards, paint & appliances. This apartment also has insuite laundry and an assigned outdoor parking stall. Nothing to do but move in and start living!

Built in 1992

Essential Information

MLS® #	E4427178
Price	\$159,500
Bedrooms	1
Bathrooms	1.00
Full Baths	1
Square Footage	627
Acres	0.00
Year Built	1992



Type	Condo / Townhouse
Sub-Type	Lowrise Apartment
Style	Single Level Apartment
Status	Active

Community Information

Address	306 5065 31 Avenue
Area	Edmonton
Subdivision	Tawa
City	Edmonton
County	ALBERTA
Province	AB
Postal Code	T6L 6S5

Amenities

Amenities	Parking-Plug-Ins, Parking-Visitor
Parking Spaces	1
Parking	Stall, See Remarks

Interior

Appliances	Fan-Ceiling, Hood Fan, Refrigerator, Stacked Washer/Dryer, Stove-Electric
Heating	Baseboard, Hot Water, Natural Gas
# of Stories	4
Stories	4
Has Basement	Yes
Basement	None, No Basement

Exterior

Exterior	Wood, Hardie Board Siding, Vinyl
Exterior Features	Public Transportation, Shopping Nearby
Roof	Asphalt Shingles
Construction	Wood, Hardie Board Siding, Vinyl
Foundation	Concrete Perimeter

Additional Information

Date Listed	March 24th, 2025
Days on Market	18
Zoning	Zone 29

Condo Fee \$297

DATA IS DEEMED RELIABLE BUT IS NOT GUARANTEED ACCURATE BY THE REALTORS® ASSOCIATION OF EDMONTON. COPYRIGHT 2025 BY THE REALTORS® ASSOCIATION OF EDMONTON. ALL RIGHTS RESERVED. Trademarks are owned or controlled by the Canadian Real Estate Association (CREA) and identify real estate professionals who are members of CREA (REALTOR®, REALTORS®) and/or the quality of services they provide (MLS®, Multiple Listing Service®)

Listing information last updated on April 11th, 2025 at 3:32pm MDT