

Courtesy Of Fadi Georgi and Megan Benoit Of MaxWell Polaris

# \$434,888 - 1351 Keswick Drive, Edmonton

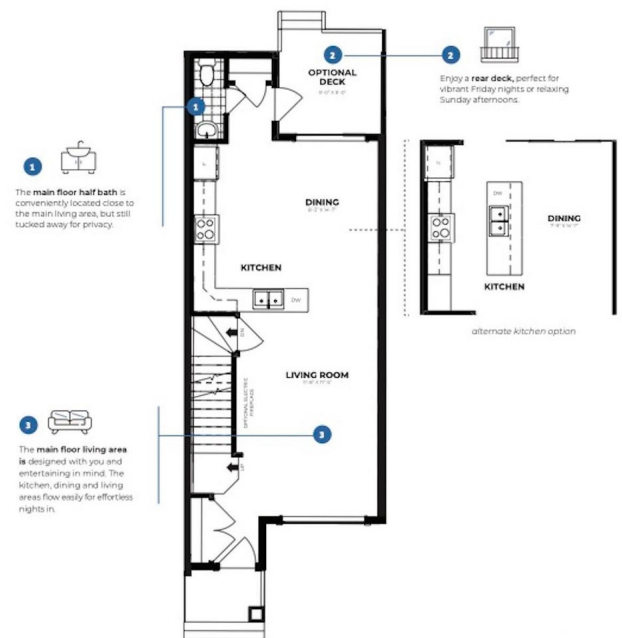
MLS® #E4428386

**\$434,888**

3 Bedroom, 2.50 Bathroom, 1,280 sqft  
Single Family on 0.00 Acres

Keswick Area, Edmonton, AB

NO CONDO FEE!! Middle unit of a 4plex townhome in the Keswick community with a detached garage. Enter the home with 9' ceilings on the main floor and easy flow layout. Kitchen features light toned cabinet, 3m quartz countertops, modern finishes and \$3,000 appliance allowance. The upper floor has laundry, 4pc main bath and 3 bedrooms including a primary bedroom with a walk in closet and 4pc ensuite. This home is perfect for starting a family or starting to build for your future! Close to walking trails, parks and ponds. Under construction tentative completion in July. Front & back landscaping included. Photos of floorplan & last two photos are renderings to represent interior colors only. HOA TBD.



Built in 2024

## Essential Information

MLS® #	E4428386
Price	\$434,888
Bedrooms	3
Bathrooms	2.50
Full Baths	2
Half Baths	1
Square Footage	1,280
Acres	0.00

Year Built	2024
Type	Single Family
Sub-Type	Residential Attached
Style	2 Storey
Status	Active

### **Community Information**

Address	1351 Keswick Drive
Area	Edmonton
Subdivision	Keswick Area
City	Edmonton
County	ALBERTA
Province	AB
Postal Code	T6W 4V8

### **Amenities**

Amenities	Ceiling 9 ft., See Remarks
Parking	Double Garage Detached

### **Interior**

Interior Features	ensuite bathroom
Appliances	Garage Control, Garage Opener, See Remarks
Heating	Forced Air-1, Natural Gas
Stories	2
Has Basement	Yes
Basement	Full, Unfinished

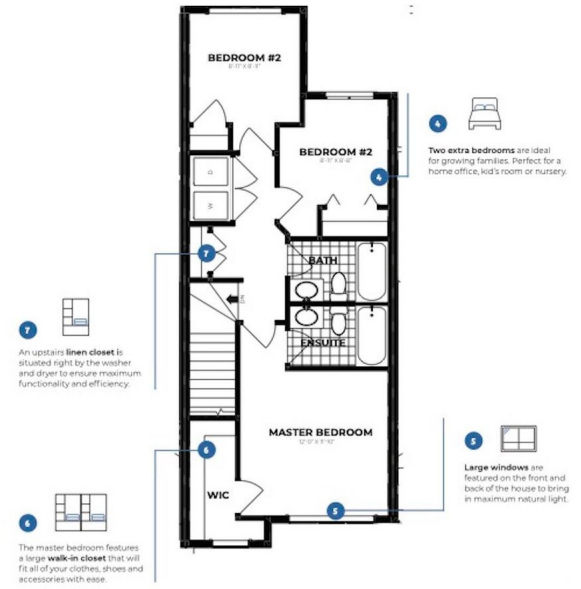
### **Exterior**

Exterior	Wood, Vinyl
Exterior Features	Airport Nearby, Playground Nearby, Public Transportation, Schools, Shopping Nearby, Stream/Pond
Roof	Asphalt Shingles
Construction	Wood, Vinyl
Foundation	Concrete Perimeter

### **Additional Information**

Date Listed	April 1st, 2025
Days on Market	9
Zoning	Zone 56

HOA Fees 1  
HOA Fees Freq. Annually



DATA IS DEEMED RELIABLE BUT IS NOT GUARANTEED ACCURATE BY THE REALTORS® ASSOCIATION OF EDMONTON. COPYRIGHT 2025 BY THE REALTORS® ASSOCIATION OF EDMONTON. ALL RIGHTS RESERVED. Trademarks are owned or controlled by the Canadian Real Estate Association (CREA) and identify real estate professionals who are members of CREA (REALTOR®, REALTORS®) and/or the quality of services they provide (MLS®, Multiple Listing Service®)

Listing information last updated on April 10th, 2025 at 12:18pm MDT