

Courtesy Of Stevi L Lashley Of Liv Real Estate

\$674,900 - 6392 King Wynd, Edmonton

MLS® #E4428964

\$674,900

3 Bedroom, 2.50 Bathroom, 1,768 sqft

Single Family on 0.00 Acres

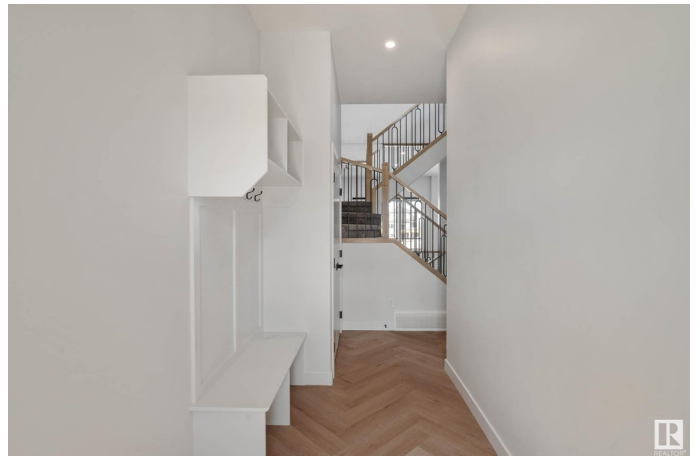
Keswick Area, Edmonton, AB

Welcome to 6392 King Wynd SW in Arbours of Keswick. This home features an open floor plan with oversized windows for natural light. The kitchen has quartz countertops, ideal for cooking. With 10-foot ceilings and herringbone floors, the main level feels spacious and luxurious. It offers three bedrooms and two bathrooms. The Primary bedroom has a spacious beautiful en-suite and a large walk-in closet. A separate entrance adds convenience, and the bonus room with a feature wall adds charm. Enjoy tranquil pond views from the backyard, and make use of the unfinished walkout basement for future living space. Conveniently located near schools, Anthony Henday Drive, shopping, parks, and dining, this property combines comfort and accessibility. Blinds are included for your convenience. Don't miss the chance to call this incredible home yours!

Built in 2025

Essential Information

MLS® #	E4428964
Price	\$674,900
Bedrooms	3
Bathrooms	2.50
Full Baths	2
Half Baths	1



Square Footage	1,768
Acres	0.00
Year Built	2025
Type	Single Family
Sub-Type	Detached Single Family
Style	2 Storey
Status	Active

Community Information

Address	6392 King Wynd
Area	Edmonton
Subdivision	Keswick Area
City	Edmonton
County	ALBERTA
Province	AB
Postal Code	T6W 5J3

Amenities

Amenities	Ceiling 10 ft., Ceiling 9 ft., Deck, Hot Water Tankless, Walkout Basement, HRV System, Natural Gas BBQ Hookup
Parking	Double Garage Attached

Interior

Interior Features	ensuite bathroom
Appliances	Garage Control, Garage Opener, Window Coverings
Heating	Forced Air-1, Natural Gas
Fireplace	Yes
Fireplaces	Insert, Tile Surround
Stories	2
Has Basement	Yes
Basement	Full, Unfinished

Exterior

Exterior	Wood, Asphalt, Vinyl, Hardie Board Siding
Exterior Features	Golf Nearby, Picnic Area, Playground Nearby, Schools, Shopping Nearby, Stream/Pond
Roof	Asphalt Shingles
Construction	Wood, Asphalt, Vinyl, Hardie Board Siding
Foundation	Slab

School Information

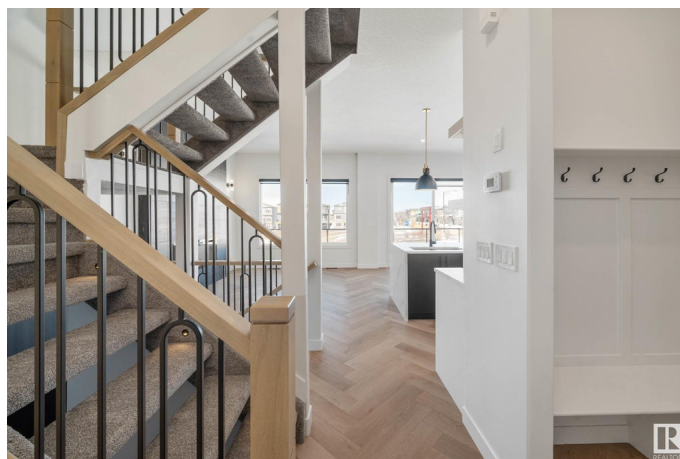
Elementary Joey Moss ,Joan Carr

Additional Information

Date Listed April 3rd, 2025

Days on Market 2

Zoning Zone 56



DATA IS DEEMED RELIABLE BUT IS NOT GUARANTEED ACCURATE BY THE REALTORS® ASSOCIATION OF EDMONTON. COPYRIGHT 2025 BY THE REALTORS® ASSOCIATION OF EDMONTON. ALL RIGHTS RESERVED. Trademarks are owned or controlled by the Canadian Real Estate Association (CREA) and identify real estate professionals who are members of CREA (REALTOR®, REALTORS®) and/or the quality of services they provide (MLS®, Multiple Listing Service®)

Listing information last updated on April 4th, 2025 at 11:02pm MDT